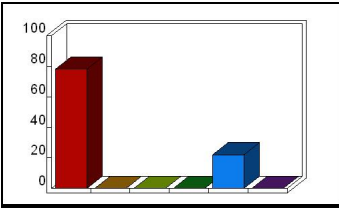


Student Satisfaction Survey - 2013

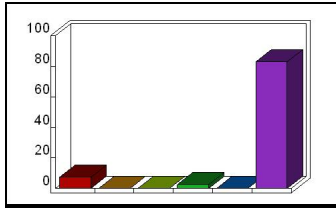
Please indicate your status:



Mean: 1.88

Response	Percent
Incoming Freshman	78.05
Returning Sophomore	0.00
Returning Junior	0.00
Returning Senior	0.00
Transfer	21.95
Other	0.00

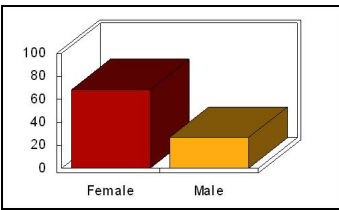
Ethnic Group:



Mean: 5.55

Response	Percent
African-American	7.32
American Indian	0.00
Asian or Pacific Islander	0.00
Hispanic	2.44
European	0.00
White non-Hispanic	82.93

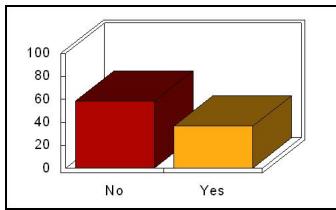
Gender:



Mean: 1.28

Response	Percent
Female	68.29
Male	26.83

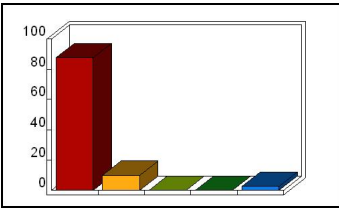
Athlete:



Mean: 1.38

Response	Percent
No	58.54
Yes	36.59

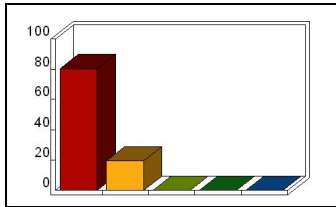
The staff of the Admissions Office was friendly and addressed my concerns promptly.



Mean: 9.56

Response	Percent
Strongly Agree	87.80
Agree	9.76
Disagree	0.00
Strongly Disagree	0.00
Not Applicable	2.44

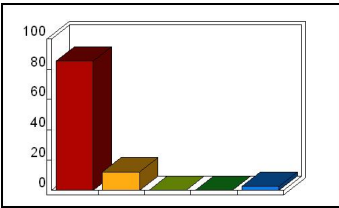
Admissions policies and procedures were clear.



Mean: 9.61

Response	Percent
Strongly Agree	80.49
Agree	19.51
Disagree	0.00
Strongly Disagree	0.00
Not Applicable	0.00

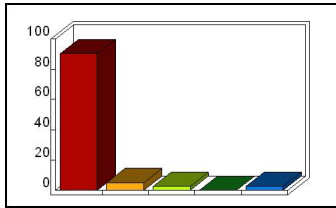
I am very satisfied with the level of competence with which my questions were answered by the staff.



Mean: 9.51

Response	Percent
Strongly Agree	85.37
Agree	12.20
Disagree	0.00
Strongly Disagree	0.00
Not Applicable	2.44

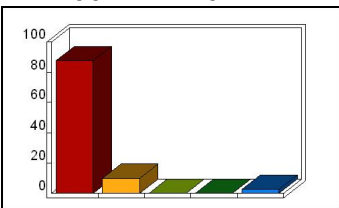
I was able to speak with someone immediately when needed.



Mean: 9.56

Response	Percent
Strongly Agree	90.24
Agree	4.88
Disagree	2.44
Strongly Disagree	0.00
Not Applicable	2.44

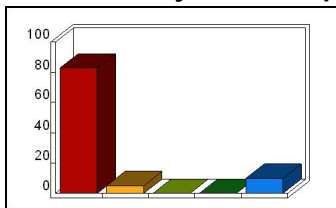
The application process was student-friendly.



Mean: 9.56

Response	Percent
Strongly Agree	87.80
Agree	9.76
Disagree	0.00
Strongly Disagree	0.00
Not Applicable	2.44

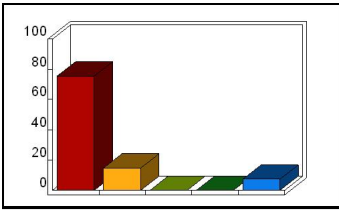
The staff of the Financial Aid Office was friendly and addressed my concerns promptly.



Mean: 8.90

Response	Percent
Strongly Agree	82.93
Agree	4.88
Disagree	0.00
Strongly Disagree	0.00
Not Applicable	9.76

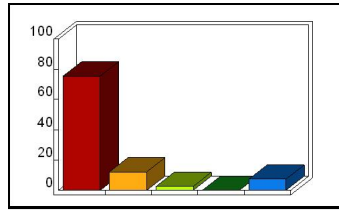
Financial Aid policies and procedures were easy and convenient.



Response	Percent
Strongly Agree	75.61
Agree	14.63
Disagree	0.00
Strongly Disagree	0.00
Not Applicable	7.32

Mean: 8.95

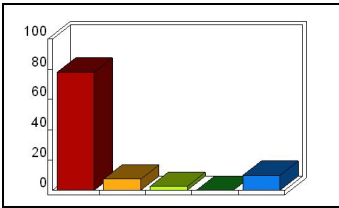
I am very satisfied with the level of competence with which my questions were answered by the staff.



Response	Percent
Strongly Agree	75.61
Agree	12.20
Disagree	2.44
Strongly Disagree	0.00
Not Applicable	7.32

Mean: 8.90

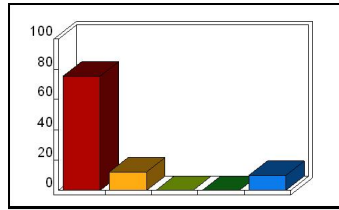
I was able to speak with someone immediately when needed.



Response	Percent
Strongly Agree	78.05
Agree	7.32
Disagree	2.44
Strongly Disagree	0.00
Not Applicable	9.76

Mean: 8.75

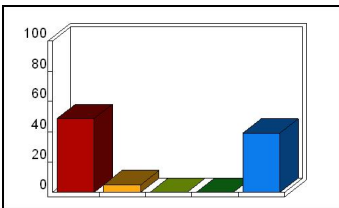
The financial aid process was student-friendly.



Response	Percent
Strongly Agree	75.61
Agree	12.20
Disagree	0.00
Strongly Disagree	0.00
Not Applicable	9.76

Mean: 8.75

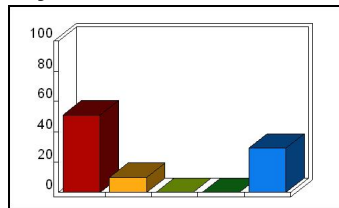
The placement testing processes and policies were clear.



Response	Percent
Strongly Agree	48.78
Agree	4.88
Disagree	0.00
Strongly Disagree	0.00
Not Applicable	39.02

Mean: 5.68

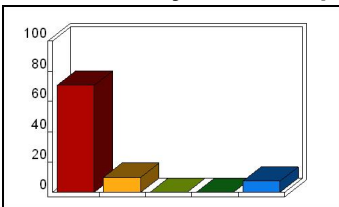
The staff was friendly and answered my questions to my satisfaction.



Response	Percent
Strongly Agree	51.22
Agree	9.76
Disagree	0.00
Strongly Disagree	0.00
Not Applicable	29.27

Mean: 6.54

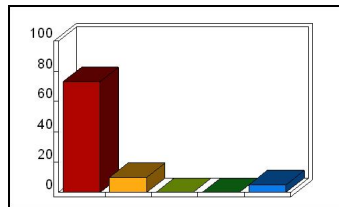
The staff of Academic Affairs was friendly and addressed my concerns promptly.



Response	Percent
Strongly Agree	70.73
Agree	9.76
Disagree	0.00
Strongly Disagree	0.00
Not Applicable	7.32

Mean: 8.94

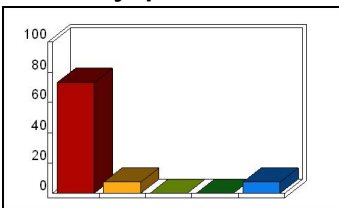
The course registration policies and procedures were clear.



Response	Percent
Strongly Agree	73.17
Agree	9.76
Disagree	0.00
Strongly Disagree	0.00
Not Applicable	4.88

Mean: 9.22

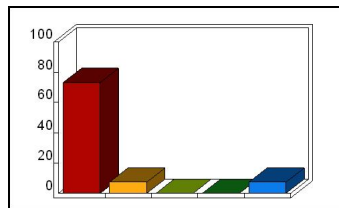
I am very satisfied with the level of competence with which my questions were answered by the staff.



Response	Percent
Strongly Agree	73.17
Agree	7.32
Disagree	0.00
Strongly Disagree	0.00
Not Applicable	7.32

Mean: 9.00

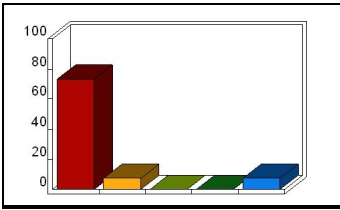
I was able to speak with someone immediately when needed.



Response	Percent
Strongly Agree	73.17
Agree	7.32
Disagree	0.00
Strongly Disagree	0.00
Not Applicable	7.32

Mean: 9.00

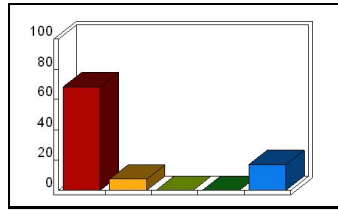
The process was student-friendly.



Mean: 9.00

Response	Percent
Strongly Agree	73.17
Agree	7.32
Disagree	0.00
Strongly Disagree	0.00
Not Applicable	7.32

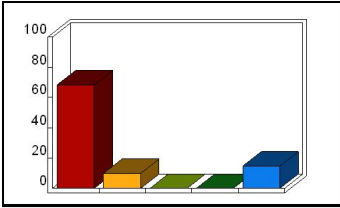
The staff of the Business Office was friendly and addressed my concerns promptly.



Mean: 8.00

Response	Percent
Strongly Agree	68.29
Agree	7.32
Disagree	0.00
Strongly Disagree	0.00
Not Applicable	17.07

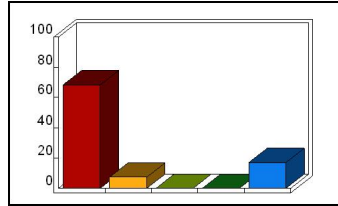
The payment policies and procedures were clear.



Mean: 8.21

Response	Percent
Strongly Agree	68.29
Agree	9.76
Disagree	0.00
Strongly Disagree	0.00
Not Applicable	14.63

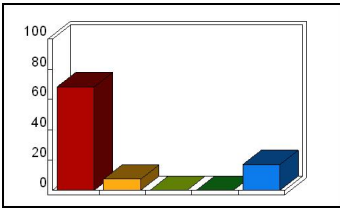
I am very satisfied with the level of competence with which my questions were answered by the staff.



Mean: 8.00

Response	Percent
Strongly Agree	68.29
Agree	7.32
Disagree	0.00
Strongly Disagree	0.00
Not Applicable	17.07

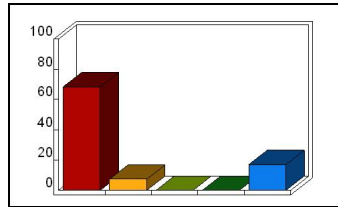
I was able to speak with someone immediately when needed.



Mean: 8.00

Response	Percent
Strongly Agree	68.29
Agree	7.32
Disagree	0.00
Strongly Disagree	0.00
Not Applicable	17.07

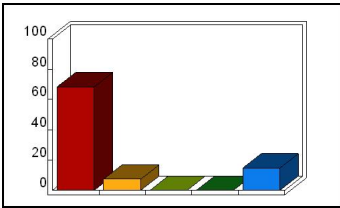
The payment process was student-friendly.



Mean: 8.00

Response	Percent
Strongly Agree	68.29
Agree	7.32
Disagree	0.00
Strongly Disagree	0.00
Not Applicable	17.07

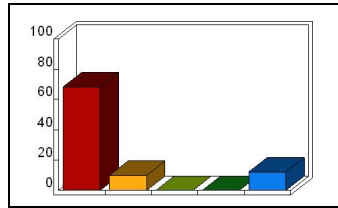
The staff of the Campus Life Office was friendly and addressed my concerns promptly.



Mean: 8.22

Response	Percent
Strongly Agree	68.29
Agree	7.32
Disagree	0.00
Strongly Disagree	0.00
Not Applicable	14.63

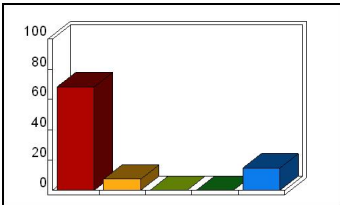
The policies and procedures relating to housing and other student issues were clear.



Mean: 8.43

Response	Percent
Strongly Agree	68.29
Agree	9.76
Disagree	0.00
Strongly Disagree	0.00
Not Applicable	12.20

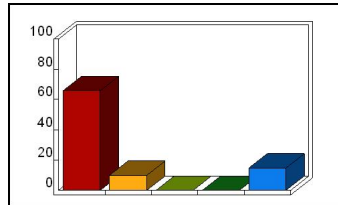
I am very satisfied with the level of competence with which my questions were answered by the staff.



Mean: 8.22

Response	Percent
Strongly Agree	68.29
Agree	7.32
Disagree	0.00
Strongly Disagree	0.00
Not Applicable	14.63

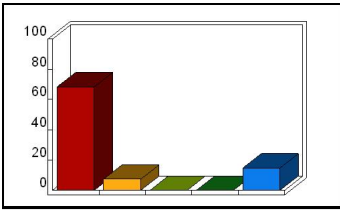
I was able to speak with someone immediately when needed.



Mean: 8.16

Response	Percent
Strongly Agree	65.85
Agree	9.76
Disagree	0.00
Strongly Disagree	0.00
Not Applicable	14.63

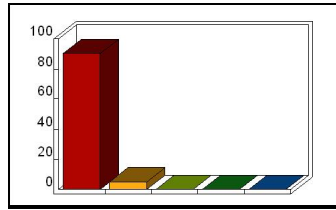
The campus life office procedures were student-friendly.



Mean: 8.22

Response	Percent
Strongly Agree	68.29
Agree	7.32
Disagree	0.00
Strongly Disagree	0.00
Not Applicable	14.63

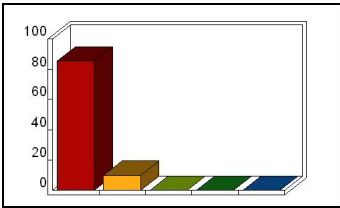
The advising process was clear and student-friendly.



Mean: 9.90

Response	Percent
Strongly Agree	90.24
Agree	4.88
Disagree	0.00
Strongly Disagree	0.00
Not Applicable	0.00

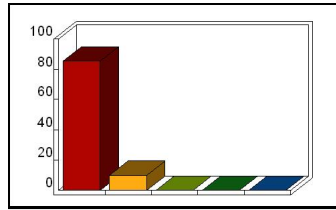
My advisor was helpful in providing direction for my college experience.



Mean: 9.79

Response	Percent
Strongly Agree	85.37
Agree	9.76
Disagree	0.00
Strongly Disagree	0.00
Not Applicable	0.00

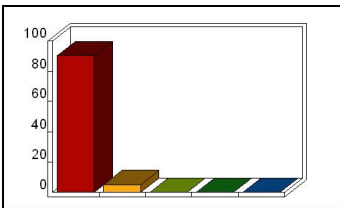
My advisor was friendly and addressed my concerns.



Mean: 9.79

Response	Percent
Strongly Agree	85.37
Agree	9.76
Disagree	0.00
Strongly Disagree	0.00
Not Applicable	0.00

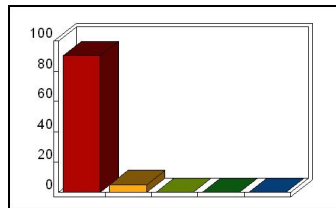
I was able to speak with someone within a reasonable amount of time.



Mean: 9.90

Response	Percent
Strongly Agree	90.24
Agree	4.88
Disagree	0.00
Strongly Disagree	0.00
Not Applicable	0.00

I am very satisfied with the level of competence of my advisor.



Mean: 9.90

Response	Percent
Strongly Agree	90.24
Agree	4.88
Disagree	0.00
Strongly Disagree	0.00
Not Applicable	0.00